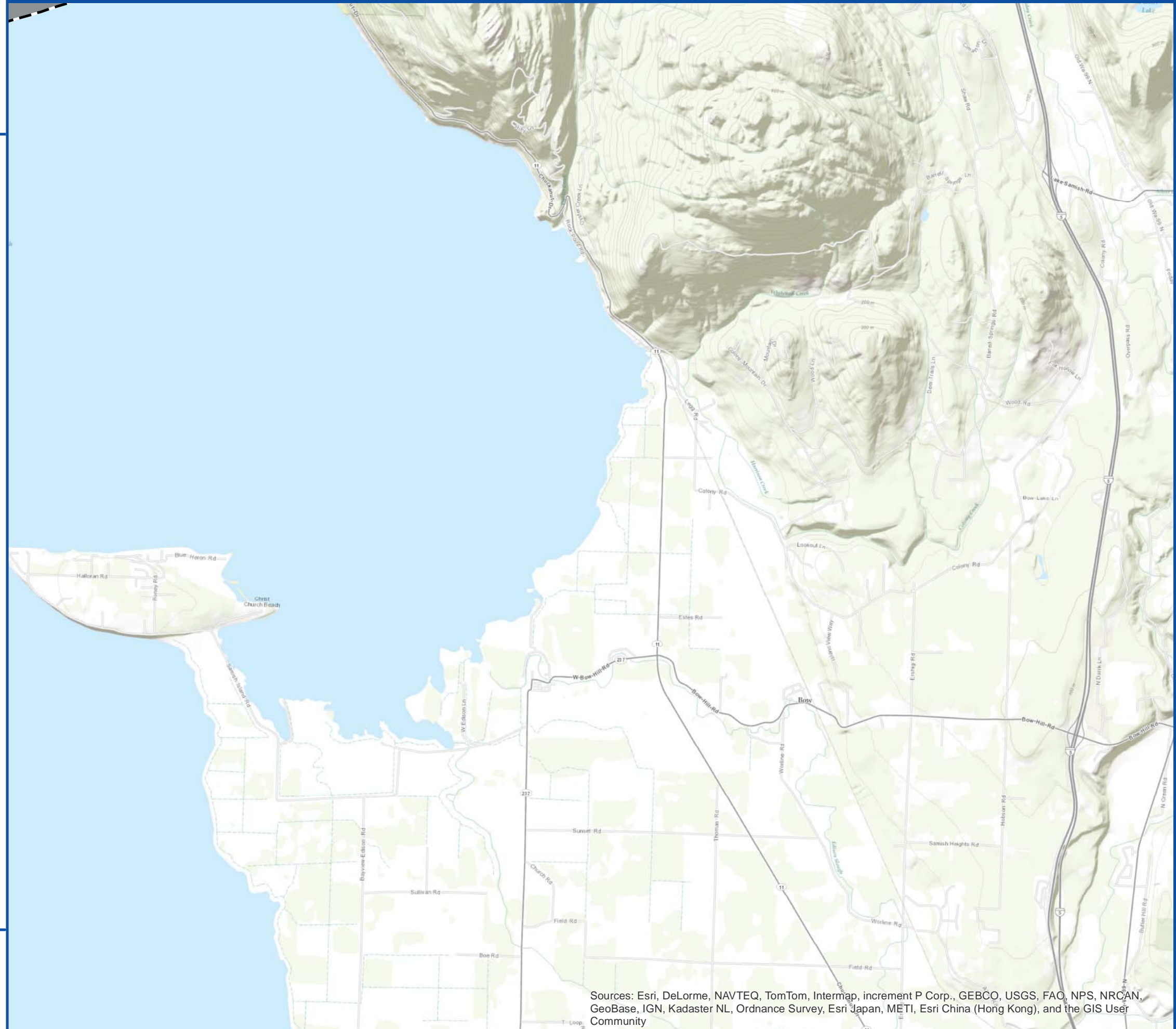




Samish Bay Management Area 1 (SAB - Samish Bay)

- 1. Remove agricultural dikes where feasible **H**



00 Site specific project (mapped)
00. Non-site specific project (unmapped)

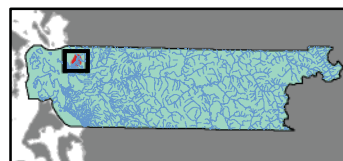
Restoration Action Types

H Habitat-related	A Habitat acquisition and/or protection
W Water quality	R Research and investigation
M Management	G Regulatory
Y Hydrologic	O Outreach
P Fish passage	

Notes: Project locations are estimated only. Please refer to the Skagit County Restoration Plan document for more details. **Data sources:** Skagit County, City of Lyman, City of Hamilton, Lower Columbia Fish Recovery Board, Habitat Work Schedule, Department of Ecology, MSC, The Watershed Company.



THE WATERSHED COMPANY
 Date: 6/27/2013
 Name: Skagit_Restoration_Plan_2013-06-24



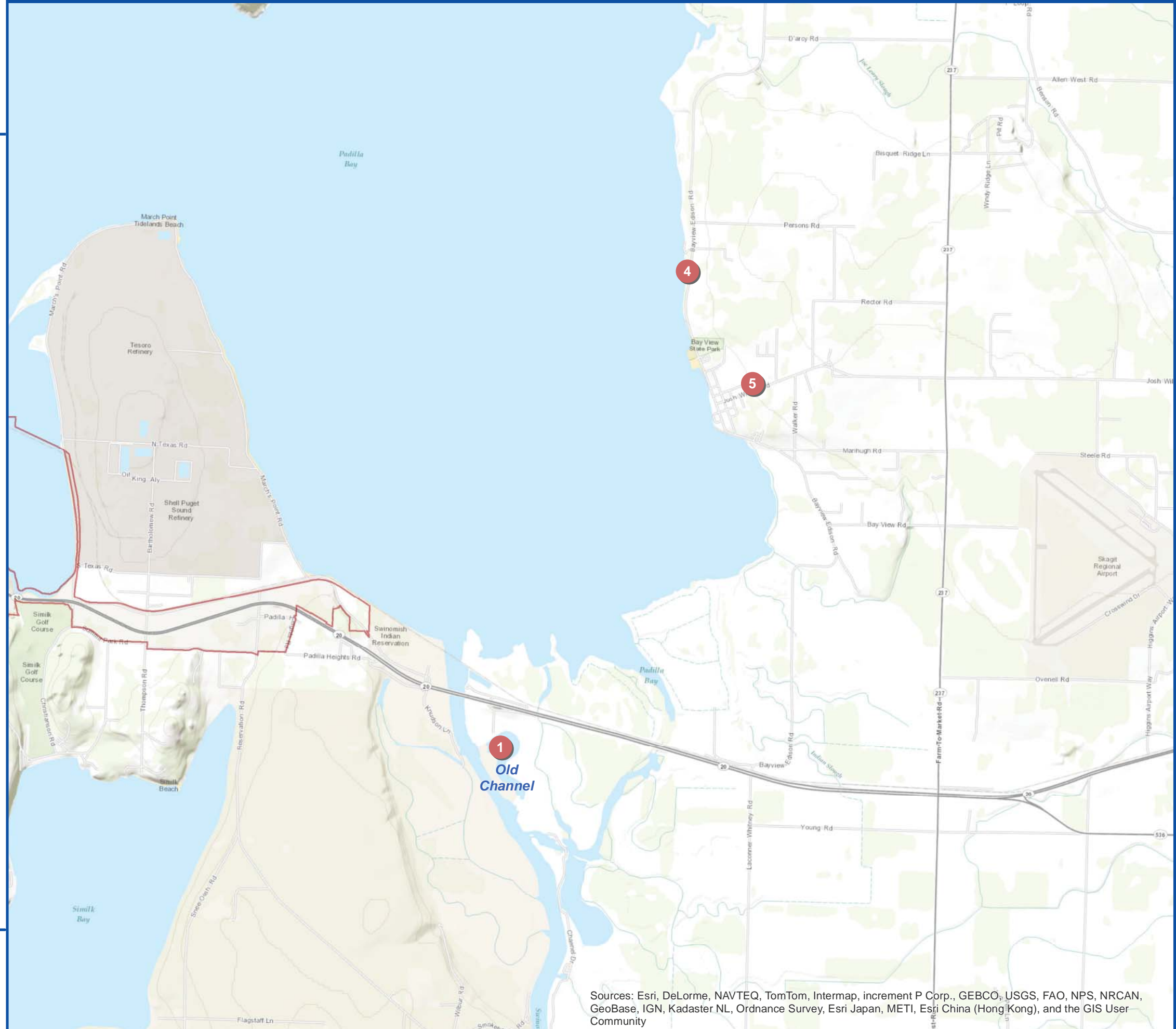
All features depicted on this map are approximate. They have not been formally delineated or surveyed and are intended for planning purposes only. Additional site-specific evaluation may be needed to confirm/verify information shown on this map.

Sources: Esri, DeLorme, NAVTEQ, TomTom, Intermap, increment P Corp., GEBCO, USGS, FAO, NPS, NRCAN, GeoBase, IGN, Kadaster NL, Ordnance Survey, Esri Japan, METI, Esri China (Hong Kong), and the GIS User Community



Samish Island, Padilla Bay & East Side of Swinomish Channel Management Area 2 (PB - Padilla Bay)

- 1 Telegraph-Phase 2 H
- 2. Remove agricultural dikes in Southern Padilla Bay H
- 3. Continue to remove Spartina colonies H M
- 4 Conservation and restoration around Bayview State Park shoreline H M
- 5 Bayview Stormwater Management W Y



00 Site specific project (mapped)

00. Non-site specific project (unmapped)

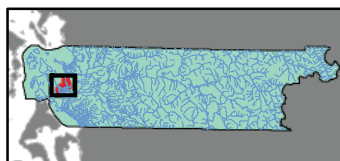
Restoration Action Types

H Habitat-related	A Habitat acquisition and/or protection
W Water quality	R Research and investigation
M Management	G Regulatory
Y Hydrologic	O Outreach
P Fish passage	

Notes: Project locations are estimated only. Please refer to the Skagit County Restoration Plan document for more details. **Data sources:** Skagit County, City of Lyman, City of Hamilton, Lower Columbia Fish Recovery Board, Habitat Work Schedule, Department of Ecology, MSC, The Watershed Company.



THE WATERSHED COMPANY
 Date: 6/27/2013
 Name: Skagit_Restoration_Plan_2013-06-24



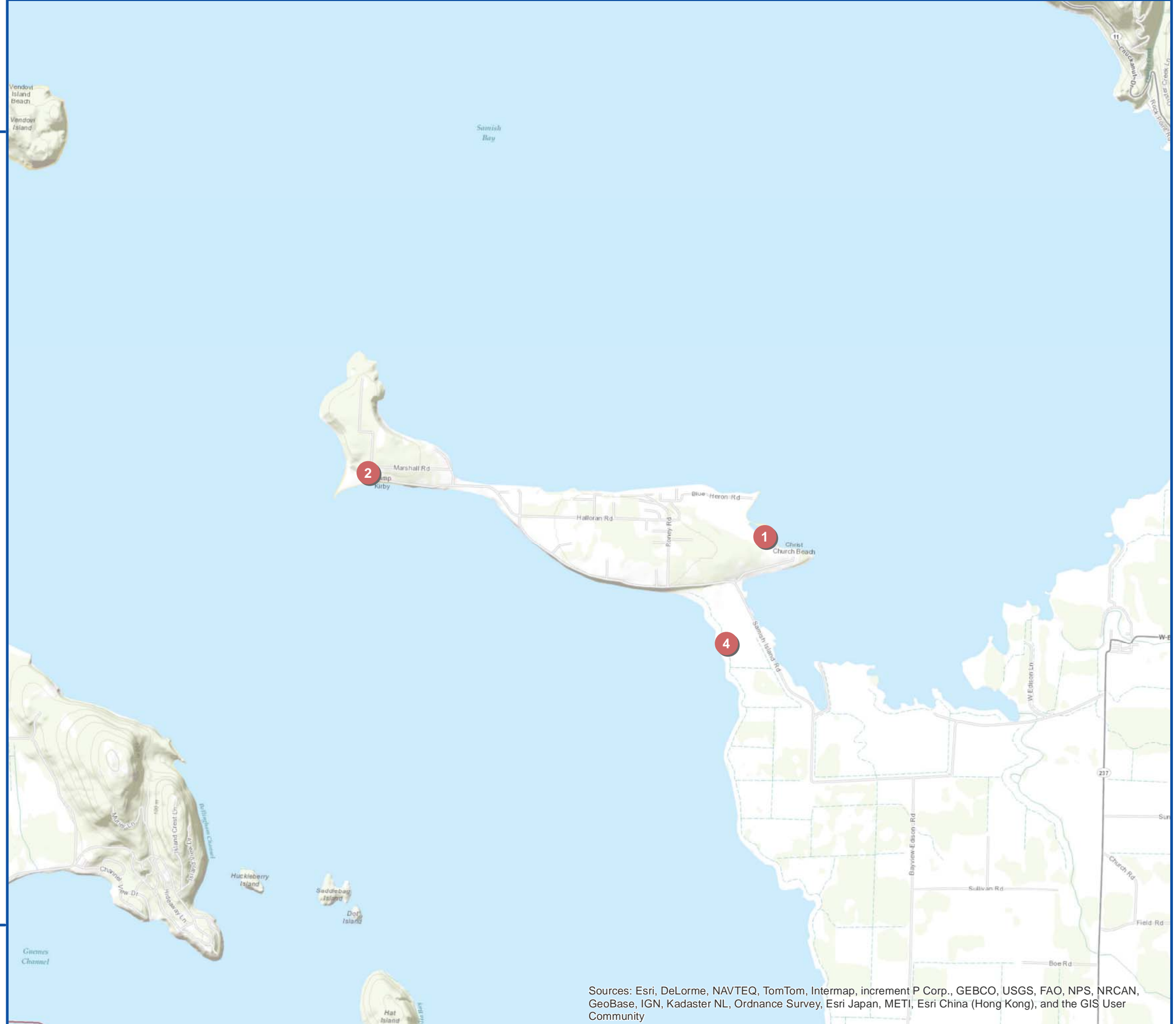
All features depicted on this map are approximate. They have not been formally delineated or surveyed and are intended for planning purposes only. Additional site-specific evaluation may be needed to confirm/verify information shown on this map.

Sources: Esri, DeLorme, NAVTEQ, TomTom, Intermap, increment P Corp., GEBCO, USGS, FAO, NPS, NRCAN, GeoBase, IGN, Kadaster NL, Ordnance Survey, Esri Japan, METI, Esri China (Hong Kong), and the GIS User Community



Samish Island, Padilla Bay & East Side of Swinomish Channel Management Area 2 (SI - Samish Island)

- 1 Restore Freestad Lake **H O**
- 2 Conservation on Samish Island **H O A**
- 3 Restore Samish Island shoreline **H O A**
- 4 Restore estuary along Samish Island Road **H A**



00 Site specific project (mapped)

00. Non-site specific project (unmapped)

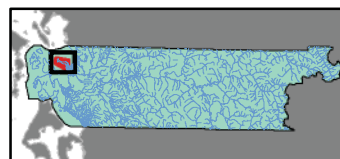
Restoration Action Types

H Habitat-related	A Habitat acquisition and/or protection
W Water quality	R Research and investigation
M Management	G Regulatory
Y Hydrologic	O Outreach
P Fish passage	

Notes: Project locations are estimated only. Please refer to the Skagit County Restoration Plan document for more details. **Data sources:** Skagit County, City of Lyman, City of Hamilton, Lower Columbia Fish Recovery Board, Habitat Work Schedule, Department of Ecology, MSC, The Watershed Company.



THE WATERSHED COMPANY
 Date: 6/27/2013
 Name: Skagit_Restoration_Plan_2013-06-24



All features depicted on this map are approximate. They have not been formally delineated or surveyed and are intended for planning purposes only. Additional site-specific evaluation may be needed to confirm/verify information shown on this map.

Sources: Esri, DeLorme, NAVTEQ, TomTom, Intermap, increment P Corp., GEBCO, USGS, FAO, NPS, NRCAN, GeoBase, IGN, Kadaster NL, Ordnance Survey, Esri Japan, METI, Esri China (Hong Kong), and the GIS User Community



Fidalgo Island and Other Islands Management Area 4 (FI - Fidalgo Island)

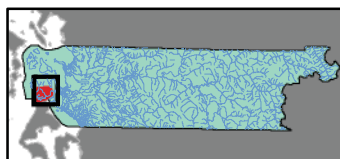
- 1 Similk Beach H
- 2 Bowman Bay Pocket Estuary H P
- 3 Fidalgo Island Stormwater Management W Y
- 4 SneeOosh Lagoon H W
- 5 Kiket Lagoon H
- 6 East shore of March's Point H R
- 7 March's Point cusp H
- 8 North shore of March's Point H
- 9 Crandall Spit H W
- 10 Remove derelict barge dock west of the Tesoro Pier H W

- 00** Site specific project (mapped)
- 00.** Non-site specific project (unmapped)
- | | |
|---|---|
| H Habitat-related | A Habitat acquisition and/or protection |
| W Water quality | R Research and investigation |
| M Management | G Regulatory |
| Y Hydrologic | O Outreach |
| P Fish passage | |

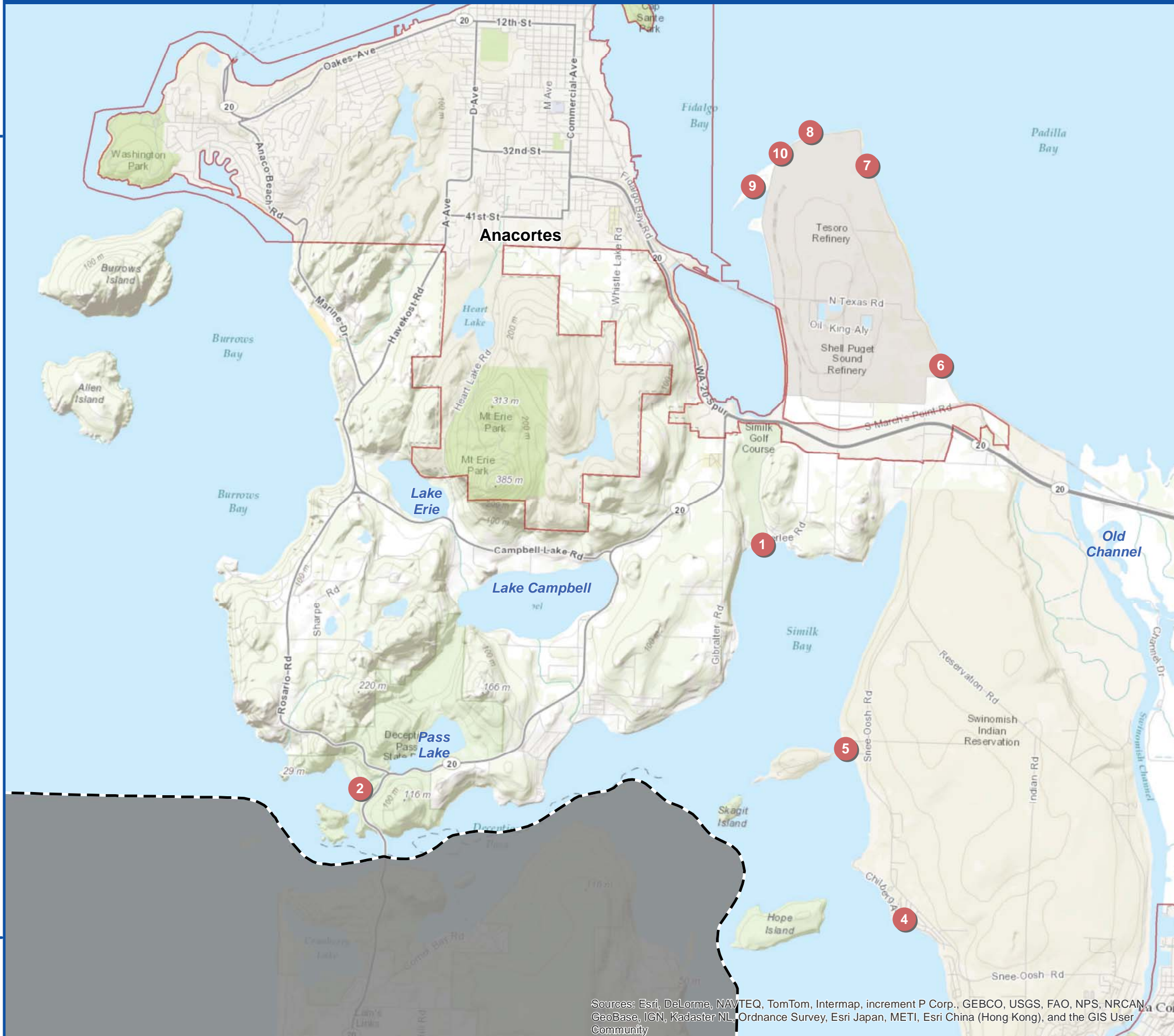
Notes: Project locations are estimated only. Please refer to the Skagit County Restoration Plan document for more details. Data sources: Skagit County, City of Lyman, City of Hamilton, Lower Columbia Fish Recovery Board, Habitat Work Schedule, Department of Ecology, MSC, The Watershed Company.



THE WATERSHED COMPANY
Date: 6/27/2013
Name: Skagit_Restoration_Plan_2013-06-24



All features depicted on this map are approximate. They have not been formally delineated or surveyed and are intended for planning purposes only. Additional site-specific evaluation may be needed to confirm/verify information shown on this map.



Sources: Esri, DeLorme, NAVTEQ, TomTom, Intermap, increment P Corp., GEBCO, USGS, FAO, NPS, NRCAN, GeoBase, IGN, Kadaster NL, Ordnance Survey, Esri Japan, METI, Esri China (Hong Kong), and the GIS User Community



Fidalgo Island and Other Islands Management Area 4 (FI - Fidalgo Island)

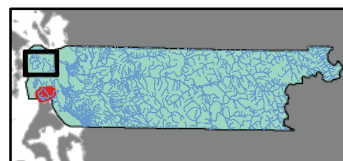
- 11 Guemes Island Restoration and Conservation H W M O
- 12 Cypress Island Restoration and Conservation H M

- 00 Site specific project (mapped)
 - 00. Non-site specific project (unmapped)
- | Restoration Action Types | | |
|--|--|--|
| H Habitat-related | A Habitat acquisition and/or protection | |
| W Water quality | R Research and investigation | |
| M Management | G Regulatory | |
| Y Hydrologic | O Outreach | |
| P Fish passage | | |

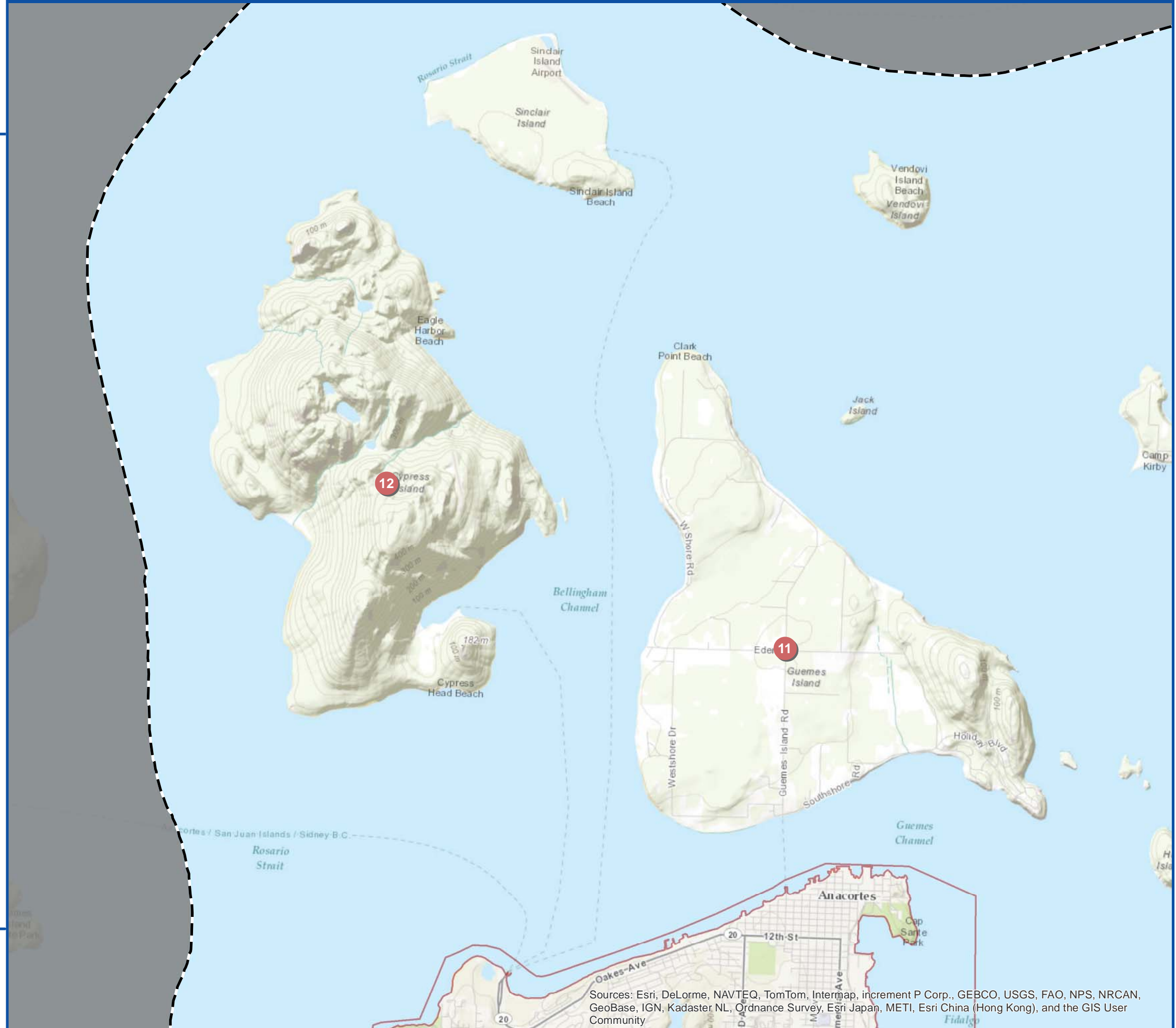
Notes: Project locations are estimated only. Please refer to the Skagit County Restoration Plan document for more details. **Data sources:** Skagit County, City of Lyman, City of Hamilton, Lower Columbia Fish Recovery Board, Habitat Work Schedule, Department of Ecology, MSC, The Watershed Company.



THE WATERSHED COMPANY
Date: 6/27/2013
Name: Skagit_Restoration_Plan_2013-06-24



All features depicted on this map are approximate. They have not been formally delineated or surveyed and are intended for planning purposes only. Additional site-specific evaluation may be needed to confirm/verify information shown on this map.



Sources: Esri, DeLorme, NAVTEQ, TomTom, Intermap, increment P Corp., GEBCO, USGS, FAO, NPS, NRCAN, GeoBase, IGN, Kadaster NL, Ordnance Survey, Esri Japan, METI, Esri China (Hong Kong), and the GIS User Community



Skagit Bay/Delta Management Area 5 (SB - North Fork Skagit River)

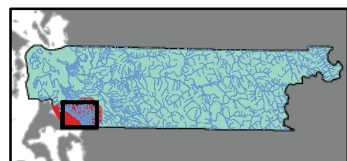
- 1 Deepwater Slough-Phase 2 H
- 2 Fir Island Farms Estuary Restoration (Davis/Dry Slough) H
- 3 McGlenn Island Causeway P
- 4 Blake's Bottleneck, Thein Farm, Rawlins Road Dike Setback H O
- 5 Cross Island Connector P
- 6 Sullivan's Hacienda: Setback levees to a pre-1956 footprint, allowing for reestablishment of emergent marsh and blind channel networks by Sullivan's Slough. H
- 7 North Fork Levee Setback: Setback levees along Skagit North Fork from former inlet of Dry Slough to the western end of Rawlins Road levees. Requires modification of North Fork bridge. H
- 8 South Fork Off Channel: Restore forest vegetation and enhance salmonid access to ~40 acre riverine tidal wetland. H
- 9 South Fork Pole Yard: Restore tidal and riverine processes that will scour and maintain on-site tidal channels providing rearing habitat for juvenile Chinook and other salmonids. H
- 10 South Fork Dike Setback: Remove 2500' of existing levee, regrade top end down to existing "bank top level," regrade lower end for off-channel connectivity. Relocate main river levee approximately 700' (maximum) from the riverbank at the mid-point of the project. Build 1800' of new levee adjacent to the County road, with keyway located along the riverward toe slope of the levee. H
- 11 Milltown Island: Continue to remove dikes and restore estuarine connectivity and tidal marsh habitat complexity across the middle and north sections of Milltown Island. H
- 12 Sandy Creek: Reestablish alluvial fan in Hill Ditch/Carpenter Creek area H
- 13 Fisher Creek Fish Passage: Correct priority fish passage barriers, including culverts English and Franklin roads. P
- 14 Upper South Fork Skagit River (Needs work) H

<ul style="list-style-type: none"> 00 Site specific project (mapped) 00. Non-site specific project (unmapped) 	<p>Restoration Action Types</p> <table border="0"> <tr> <td style="color: green;">H</td> <td>Habitat-related</td> <td style="color: green;">A</td> <td>Habitat acquisition and/or protection</td> </tr> <tr> <td style="color: blue;">W</td> <td>Water quality</td> <td style="color: red;">R</td> <td>Research and investigation</td> </tr> <tr> <td style="color: orange;">M</td> <td>Management</td> <td style="color: brown;">G</td> <td>Regulatory</td> </tr> <tr> <td style="color: green;">Y</td> <td>Hydrologic</td> <td style="color: blue;">O</td> <td>Outreach</td> </tr> <tr> <td style="color: red;">P</td> <td>Fish passage</td> <td></td> <td></td> </tr> </table>	H	Habitat-related	A	Habitat acquisition and/or protection	W	Water quality	R	Research and investigation	M	Management	G	Regulatory	Y	Hydrologic	O	Outreach	P	Fish passage		
H	Habitat-related	A	Habitat acquisition and/or protection																		
W	Water quality	R	Research and investigation																		
M	Management	G	Regulatory																		
Y	Hydrologic	O	Outreach																		
P	Fish passage																				

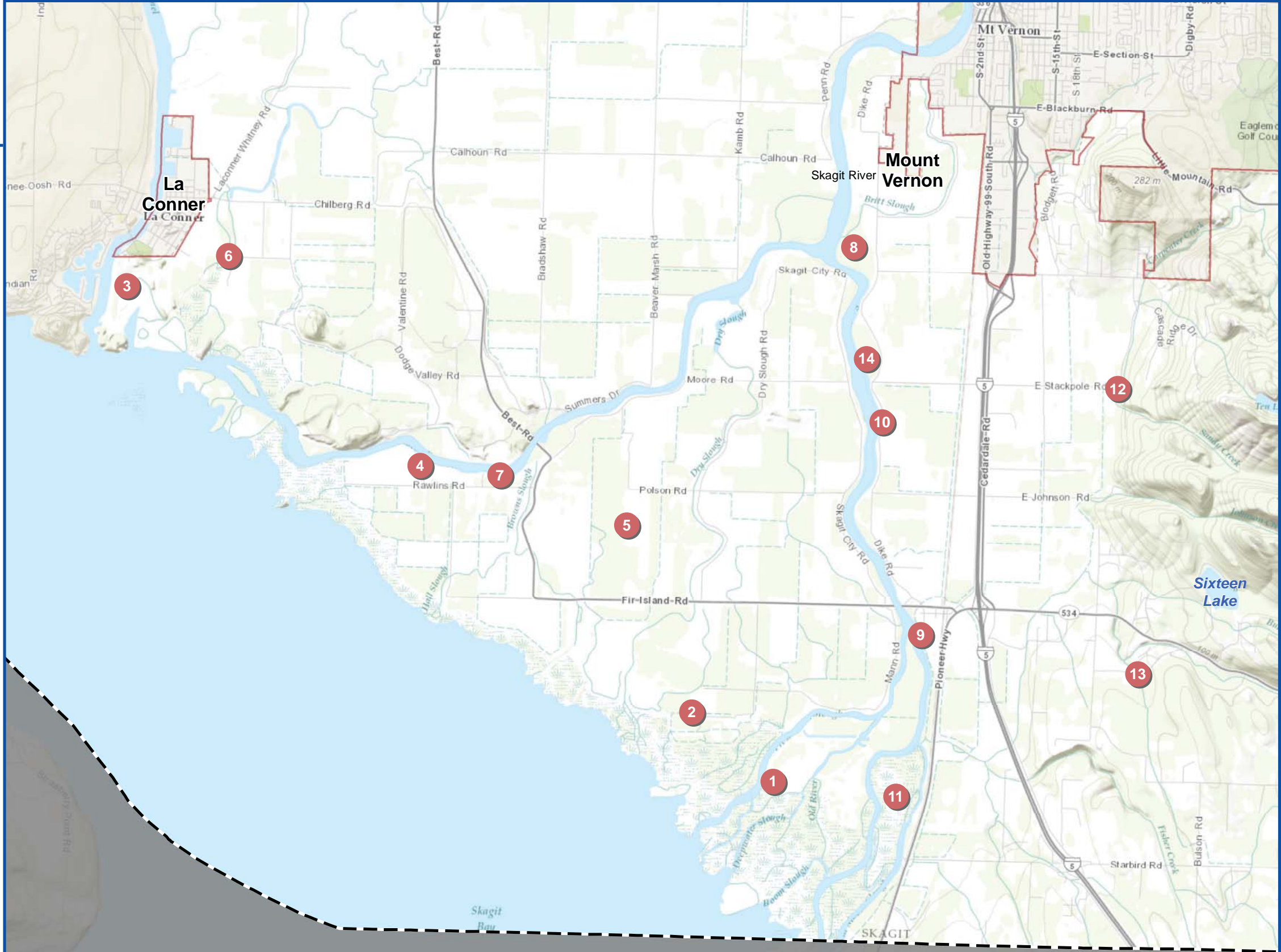
Notes: Project locations are estimated only. Please refer to the Skagit County Restoration Plan document for more details. **Data sources:** Skagit County, City of Lyman, City of Hamilton, Lower Columbia Fish Recovery Board, Habitat Work Schedule, Department of Ecology, MSC, The Watershed Company.



THE WATERSHED COMPANY
 Date: 6/27/2013
 Name: Skagit_Restoration_Plan_2013-06-24



All features depicted on this map are approximate. They have not been formally delineated or surveyed and are intended for planning purposes only. Additional site-specific evaluation may be needed to confirm/verify information shown on this map.





Lower Skagit Diking Districts Management Area 6 (LS - Lower Skagit)

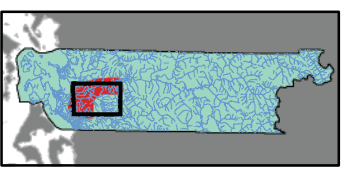
- 1 Cottonwood Island: The objective of this project is to increase the hydraulic connectivity to the historic Cottonwood channel located at the North and South Forks of the Skagit River. **H P**
- 2 Britt Slough: This project seeks to re-establish a historic riverine wetland near the southern portion of the site and examine potential for a distributary connection to the mainstem using the remaining portion of the historic Britt Slough channel. **H**
- 3 Nookachamps Confluence: This project would split mainstem flow by excavating a channel through the oxbow at the Nookachamps confluence. **H**
- 4 Sterling Reach Restoration: This project would reestablish hydraulic connections to the mainstem river throughout the historic oxbows in the vicinity of Sterling. These oxbows, now known as Debay's and Hart's sloughs would be reconnected such that mainstem flows could re-establish historic channel networks. This would require partial removal of a Corps training levee south of Highway 9 and the excavation of historic channels in the present day floodplain. **H**
- 5 River Bend: Conceptual restoration actions at this site focus on actions that restore connectivity to remaining low topographic depressions and oxbow channels. **H**
- 6 Sorenson Creek Fish Passage: Correct priority fish passage barriers. **P**
- 7 Barney Lake-Logan-Nookachamps **H**

00 Site specific project (mapped)	Restoration Action Types	
00. Non-site specific project (unmapped)	H Habitat-related	A Habitat acquisition and/or protection
	W Water quality	R Research and investigation
	M Management	G Regulatory
	Y Hydrologic	O Outreach
	P Fish passage	

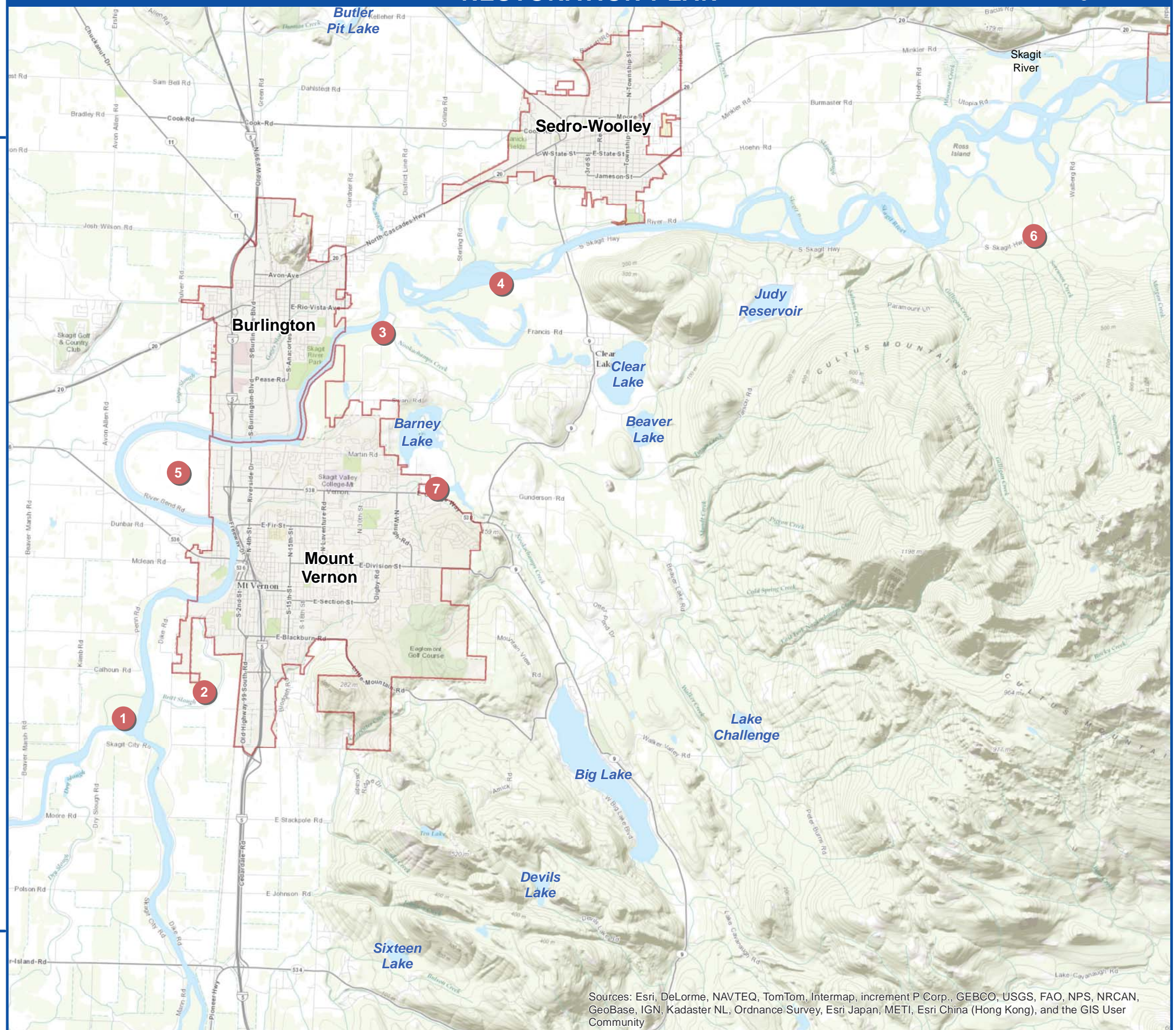
Notes: Project locations are estimated only. Please refer to the Skagit County Restoration Plan document for more details. **Data sources:** Skagit County, City of Lyman, City of Hamilton, Lower Columbia Fish Recovery Board, Habitat Work Schedule, Department of Ecology, MSC, The Watershed Company.



THE WATERSHED COMPANY
 Date: 6/27/2013
 Name: Skagit_Restoration_Plan_2013-06-24



All features depicted on this map are approximate. They have not been formally delineated or surveyed and are intended for planning purposes only. Additional site-specific evaluation may be needed to confirm/verify information shown on this map.

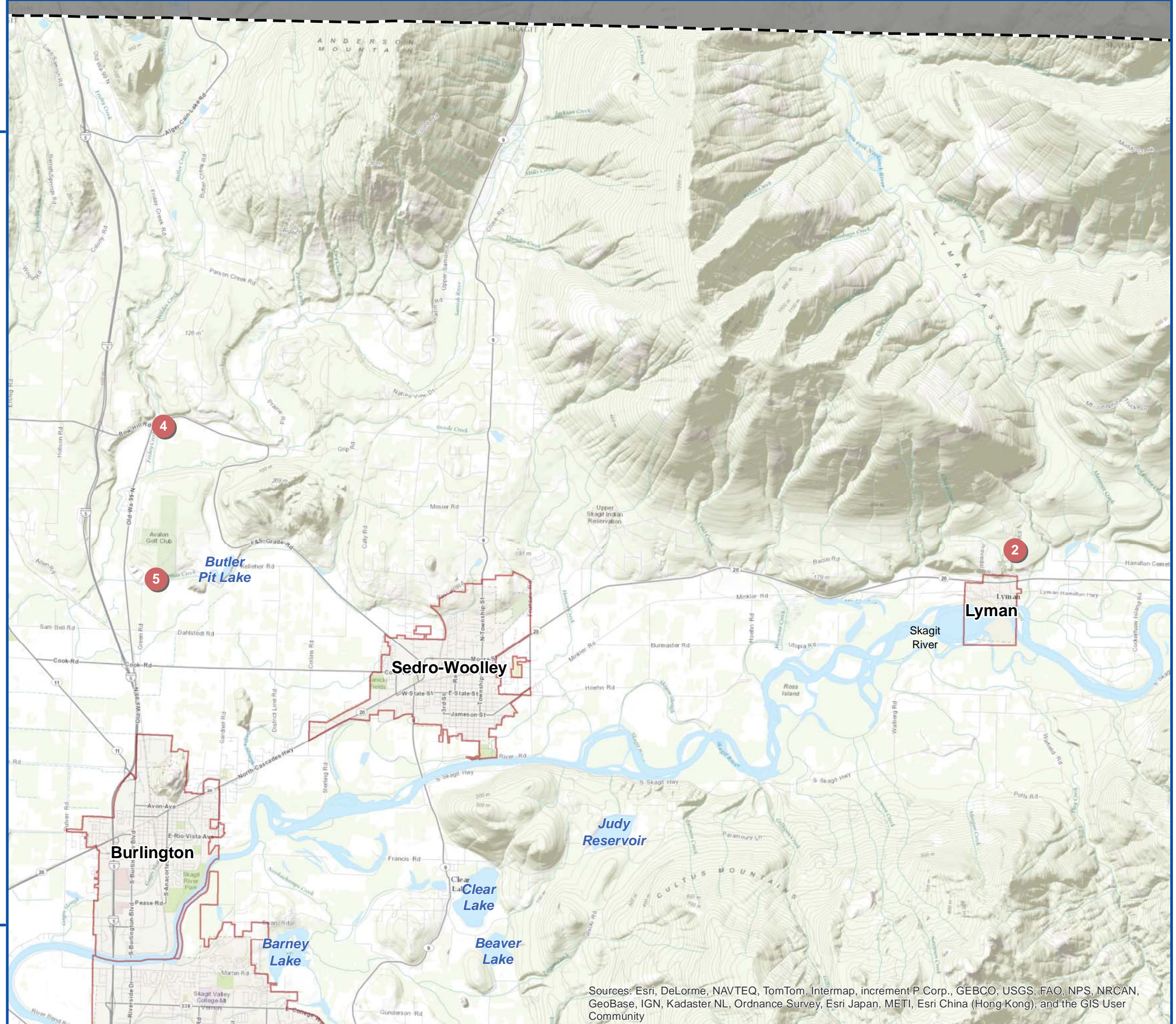


Sources: Esri, DeLorme, NAVTEQ, TomTom, Intermap, increment P Corp., GEBCO, USGS, FAO, NPS, NRCAN, GeoBase, IGN, Kadaster NL, Ordnance Survey, Esri Japan, METI, Esri China (Hong Kong), and the GIS User Community



Samish River Management Area 7 (SR - Samish River)

1. Clean Samish Initiative - Samish Pollution Identification and Correction Program: The purpose of the PIC program is to identify and correct sources of bacterial contamination in the watershed. The program provides a multifaceted approach to address fecal coliform pollution problems, including intensive monitoring, incentives, compliance and enforcement, and a comprehensive education program. **W O**
2. Fish Passage Projects Correct priority fish passage barriers at Pipeline Road. **P**
3. Samish River Knotweed Control- Continue program to identify and treat knotweed infestations in the Samish River Basin. **H M**
4. Prairie Road/ Ware Creek- Relocate creek out of Prairie Road ditch **H**
5. Reroute Thomas Creek away from Kelleher Rd. **H**



00 Site specific project (mapped)
00. Non-site specific project (unmapped)

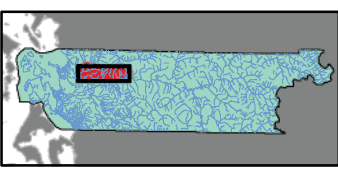
Restoration Action Types

H Habitat-related	A Habitat acquisition and/or protection
W Water quality	R Research and investigation
M Management	G Regulatory
Y Hydrologic	O Outreach
P Fish passage	

Notes: Project locations are estimated only. Please refer to the Skagit County Restoration Plan document for more details. **Data sources:** Skagit County, City of Lyman, City of Hamilton, Lower Columbia Fish Recovery Board, Habitat Work Schedule, Department of Ecology, MSC, The Watershed Company.



THE WATERSHED COMPANY
 Date: 6/27/2013
 Name: Skagit_Restoration_Plan_2013-06-24



All features depicted on this map are approximate. They have not been formally delineated or surveyed and are intended for planning purposes only. Additional site-specific evaluation may be needed to confirm/verify information shown on this map.

Sources: Esri, DeLorme, NAVTEQ, TomTom, Intermap, increment P Corp., GEBCO, USGS, FAO, NPS, NRCAN, GeoBase, IGN, Kadaster NL, Ordnance Survey, Esri Japan, METI, Esri China (Hong Kong), and the GIS User Community

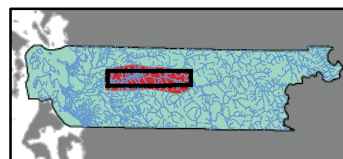
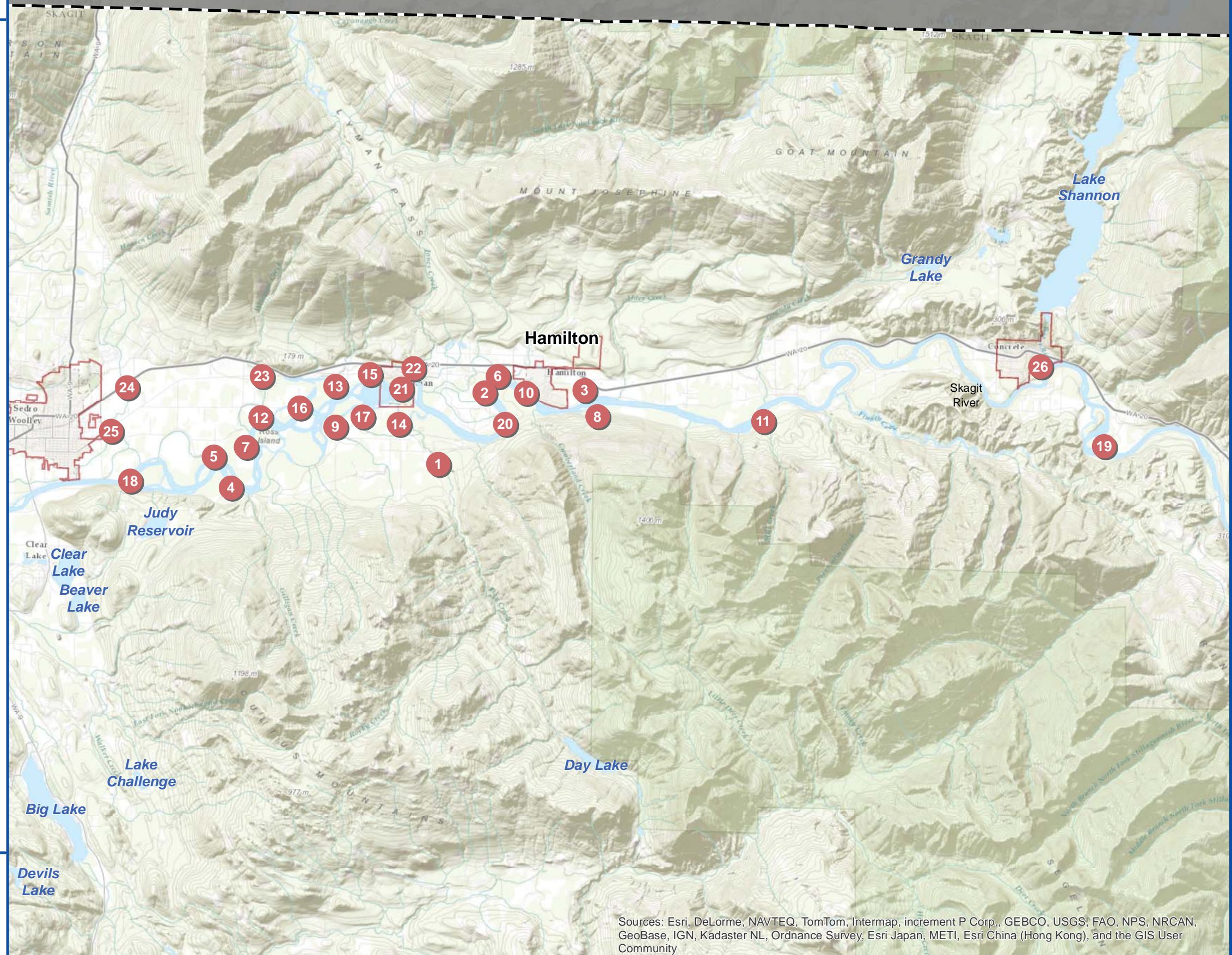


Middle Skagit Management Area 8 (MS - Skagit River)

- 1 Day Creek Habitat Restoration: Enhance riparian vegetation and install LWD. H O
- 2 Cockreham Island: Evaluate and implement habitat restoration on right bank Skagit River, downstream of Hamilton. H
- 3 Hamilton Floodplain Restoration: Move existing development from floodway (with Hamilton Public Development Authority). H
- 4 Gilligan Floodplain Restoration: Restore side channel and floodplain habitat downstream of Gilligan Creek. H
- 5 Skiyou Slough: Levee removal at Gilligan, consider removal of hydraulic controls at Skiyou inlet. H
- 6 Etach Slough Interim Reconnection: Interim reconnection at Etach Slough. H
- 7 Youngs Slough reconnection and restoration. H
- 8 Davis Slough/Iron Mountain Ranch Hydrologic Connectivity: Restore natural hydrologic flow paths and reestablish unrestricted fish passage. H P
- 9 Ross Island off-channel reconnection at SK060A-13 H
- 10 Careys Slough interim off-channel reconnection & restoration H
- 11 Savage-Mill Creeks off-channel reconnection complex H
- 12 Black Slough floodplain restoration H
- 13 Robinson Rd floodplain restoration: Landowner coordination, remove armoring, restore floodplain connectivity, and revegetate H
- 14 Day Creek Meadows off-channel reconnection H
- 15 Cascade Trail Relocation: Relocating a portion of the Cascade Trail, remove shoreline armoring, and increase floodplain connectivity H
- 16 Utopia Rd at Minker Rd floodplain restoration H
- 17 Ross Island Slough inlet improvement at SK060A-14 H
- 18 Coal Creek tributary junction floodplain restoration at SK060A-1 H
- 19 Thunderbird Lane floodplain restoration H
- 20 Cumberland off-channel habitat improvement H
- 21 Lyman side channel habitat improvement H
- 22 Pipeline Road Fish Passage Correct priority fish passage barriers. P
- 23 Upper Wiseman Creek: Alluvial fan creation at Minkler Rd H A
- 24 Hansen Creek Reach 5 Acquisition and Restoration H A
- 25 Dairy Tributary Fish Passage Project Correct priority fish passage barriers. P
- 26 Lower Baker River H O

00 Site specific project (mapped)	H Habitat-related	A Habitat acquisition and/or protection
00 Non-site specific project (unmapped)	W Water quality	R Research and investigation
	M Management	G Regulatory
	Y Hydrologic	O Outreach
	P Fish passage	

Notes: Project locations are estimated only. Please refer to the Skagit County Restoration Plan document for more details. **Data sources:** Skagit County, City of Lyman, City of Hamilton, Lower Columbia Fish Recovery Board, Habitat Work Schedule, Department of Ecology, MSC, The Watershed Company.



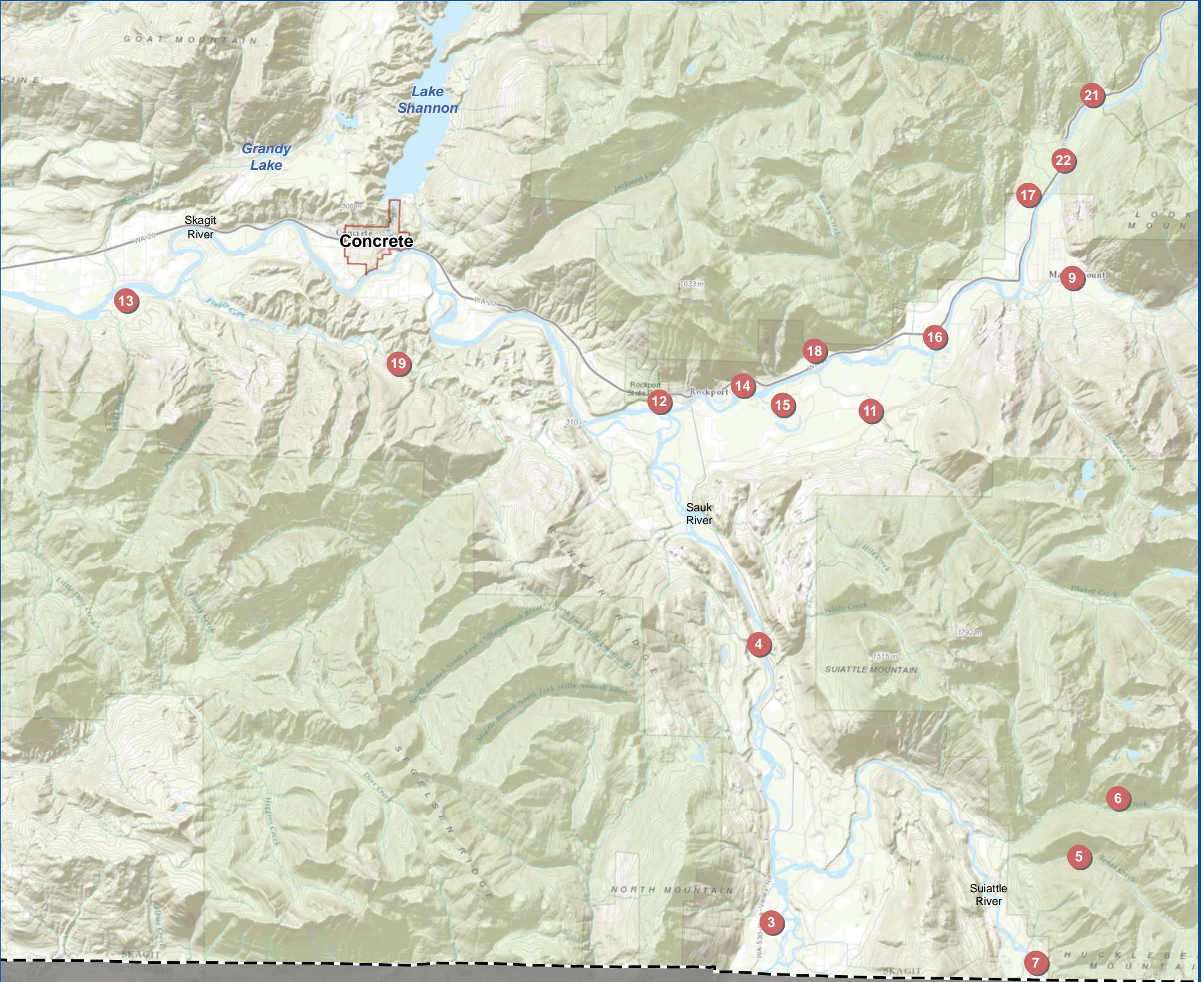


Upper Skagit Management Area 9 (US - Skagit River)

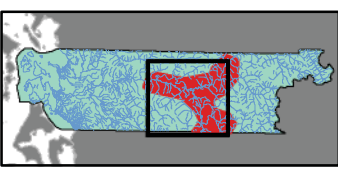
1. Sauk Roads: Reduce erosion potential of Forest Service roads in the Sauk Prairie and Dan Creek watersheds in the Sauk River Basin **W H**
2. Upper Sauk Erosion Control: Replace worn out and undersized culverts, replace Chockwich Fish Passage, and replace undersized Bedal Bridge. **W H**
3. Sauk River Riparian Restoration: Improve habitat conditions by restoring native riparian and floodplain vegetation at three sites. **H**
4. Government Bridge: Construct bridge to span a portion of the floodplain, which extends ~215 meters on the left bank side of the Sauk River. **H**
5. Suiattle Roads: Stabilize or decommission forest roads in the Suiattle River Basin. **H**
6. Downey Creek Crossing: Close Suiattle River Rd at Downey Creek Crossing, or expand bridge over Downey Creek to a minimize impacts to the associated alluvial fan. **H W**
7. Boundary Bridge: Remove road and fill to restore floodplain connectivity. **H**
8. Lower Cascade Roads: Remove and revegetate section of forest road, and treat abandoned culvert crossings. **W H**
9. Fish Passage Improvement: Resolve fish passage barrier on left bank tributary to the Cascade River at Cascade River Mile 1.25. **P**
10. Culvert Replacement: Reduce the risk and negative effects of road failure. **W H**
11. Illabot Creek Floodplain Connectivity: Re^Hire floodplain function **H**
12. Howard Miller Steelhead Park: Route small stream back to its natural course. **H**
13. Savage Slough Restoration: Acquire and restore area near Savage Slough. **H**
14. Barnaby Reach Restoration: Pursue alternatives for improving habitat conditions, restoring natural processes, and reducing maintenance costs. **H**
15. Skagit Watershed Tier 1 and Tier 2 Floodplain Acquisition. **A O**
16. Upper Skagit Floodplain Restoration: Conduct small-scale restoration work in the floodplains of the Upper Skagit, Sauk, Suiattle and Cascade Rivers. **H**
17. Marblemount Bridge: Reconnect channels or floodplain to the river. **H**
18. Car Body Hole: Remove armoring and debris at Car Body Hole, and restore native riparian and floodplain vegetation. **H**
19. Finney Riparian: Restoring riparian forest and add LWD. **H**
20. Upper Skagit Acquisitions. **A H**
21. Bacon Creek Fish Passage **P H**
22. Diobsud Roads Erosion Control **W H**

00 Site specific project (mapped)	H Habitat-related	A Habitat acquisition and/or protection
00 Non-site specific project (unmapped)	W Water quality	R Research and investigation
	M Management	G Regulatory
	Y Hydrologic	O Outreach
	P Fish passage	

Notes: Project locations are estimated only. Please refer to the Skagit County Restoration Plan document for more details. Data sources: Skagit County, City of Lyman, City of Hamilton, Lower Columbia Fish Recovery Board, Habitat Work Schedule, Department of Ecology, MSC, The Watershed Company.



THE WATERSHED COMPANY
Date: 6/27/2013
Name: Skagit_Restoration_Plan_2013-06-24



All features depicted on this map are approximate. They have not been formally delineated or surveyed and are intended for planning purposes only. Additional site-specific evaluation may be needed to confirm/verify information shown on this map.

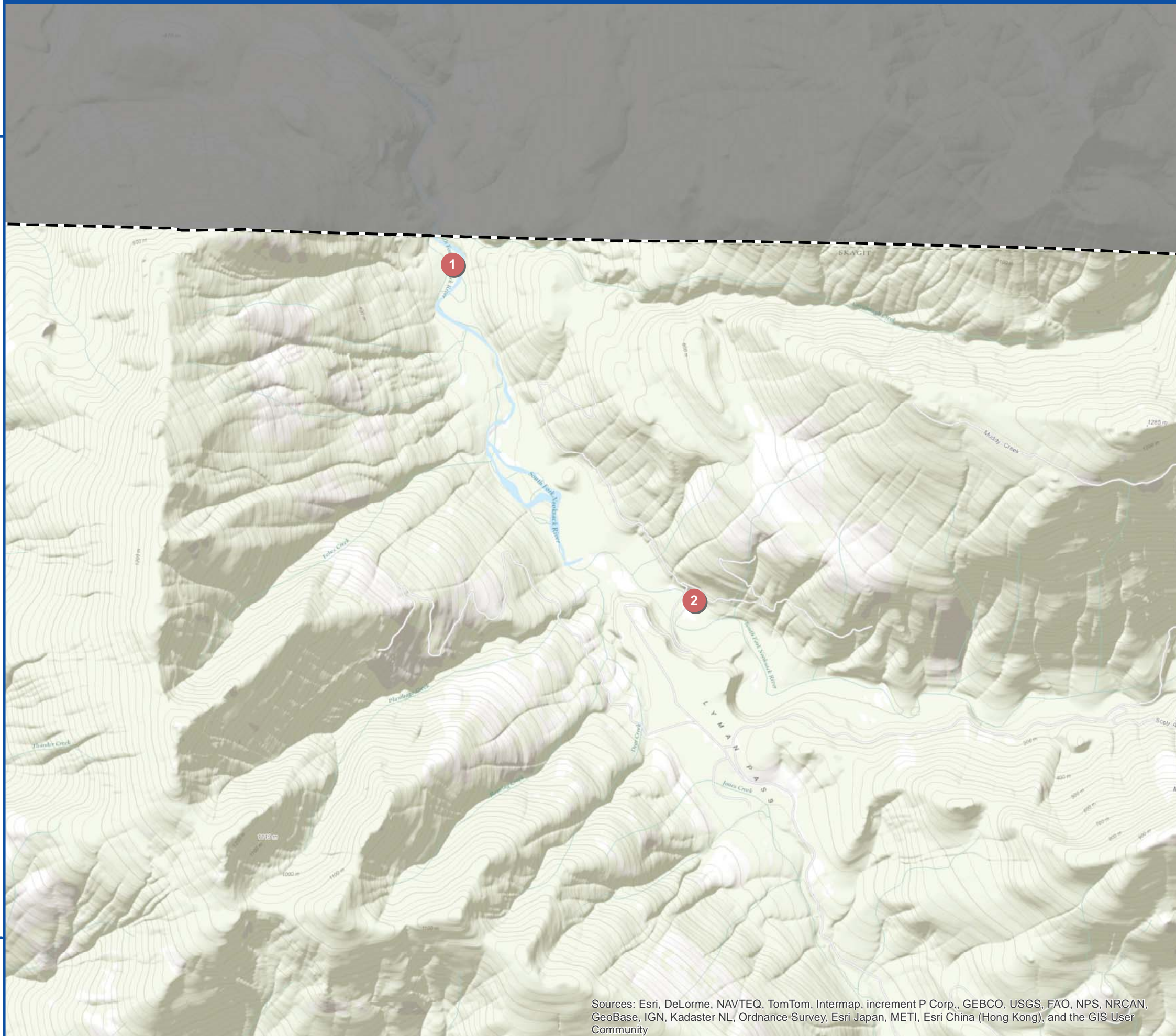
North Fork Stillaguamish River

Sources: Esri, DeLorme, NAVTEQ, TomTom, Intermap, increment P Corp., GEBCO, USGS, FAO, NPS, NRCAN, GeoBase, IGN, Kadaster NL, Ordnance Survey, Esri Japan, METI, Esri China (Hong Kong), and the GIS User Community



Nooksack Management Area 10 (WRIA 1) (Nook - Nooksack)

- 1 South Fork Nooksack: Cavanaugh Island Restoration. H
- 2 Larson's Floodplain Refuge Project H
- 3. Fish Passage Projects Correct priority fish passage barriers in Skagit County. P



00 Site specific project (mapped)

00 Non-site specific project (unmapped)

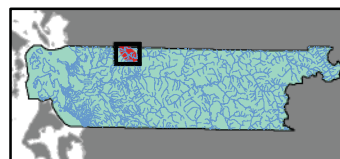
Restoration Action Types

H Habitat-related	A Habitat acquisition and/or protection
W Water quality	R Research and investigation
M Management	G Regulatory
Y Hydrologic	O Outreach
P Fish passage	

Notes: Project locations are estimated only. Please refer to the Skagit County Restoration Plan document for more details. **Data sources:** Skagit County, City of Lyman, City of Hamilton, Lower Columbia Fish Recovery Board, Habitat Work Schedule, Department of Ecology, MSC, The Watershed Company.



THE WATERSHED COMPANY
 Date: 6/27/2013
 Name: Skagit_Restoration_Plan_2013-06-24



All features depicted on this map are approximate. They have not been formally delineated or surveyed and are intended for planning purposes only. Additional site-specific evaluation may be needed to confirm/verify information shown on this map.

Sources: Esri, DeLorme, NAVTEQ, TomTom, Intermap, increment P Corp., GEBCO, USGS, FAO, NPS, NRCAN, GeoBase, IGN, Kadaster NL, Ordnance Survey, Esri Japan, METI, Esri China (Hong Kong), and the GIS User Community



Stillaguamish Management Area 10 (WRIA 5) (Stilly - Stillaguamish)

1 Stillaguamish Watershed Stewardship Pilot Project H

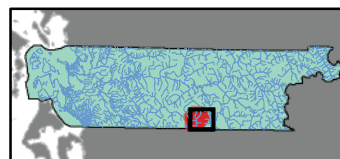


- 00 Site specific project (mapped)
 - 00 Non-site specific project (unmapped)
- | Restoration Action Types | | | |
|--------------------------|-----------------|---|---------------------------------------|
| H | Habitat-related | A | Habitat acquisition and/or protection |
| W | Water quality | R | Research and investigation |
| M | Management | G | Regulatory |
| Y | Hydrologic | O | Outreach |
| P | Fish passage | | |

Notes: Project locations are estimated only. Please refer to the Skagit County Restoration Plan document for more details. **Data sources:** Skagit County, City of Lyman, City of Hamilton, Lower Columbia Fish Recovery Board, Habitat Work Schedule, Department of Ecology, MSC, The Watershed Company.



THE WATERSHED COMPANY
Date: 6/27/2013
Name: Skagit_Restoration_Plan_2013-06-24



All features depicted on this map are approximate. They have not been formally delineated or surveyed and are intended for planning purposes only. Additional site-specific evaluation may be needed to confirm/verify information shown on this map.

Sources: Esri, DeLorme, NAVTEQ, TomTom, Intermap, increment P Corp., GEBCO, USGS, FAO, NPS, NRCAN, GeoBase, IGN, Kadaster NL, Ordnance Survey, Esri Japan, METI, Esri China (Hong Kong), and the GIS User Community